

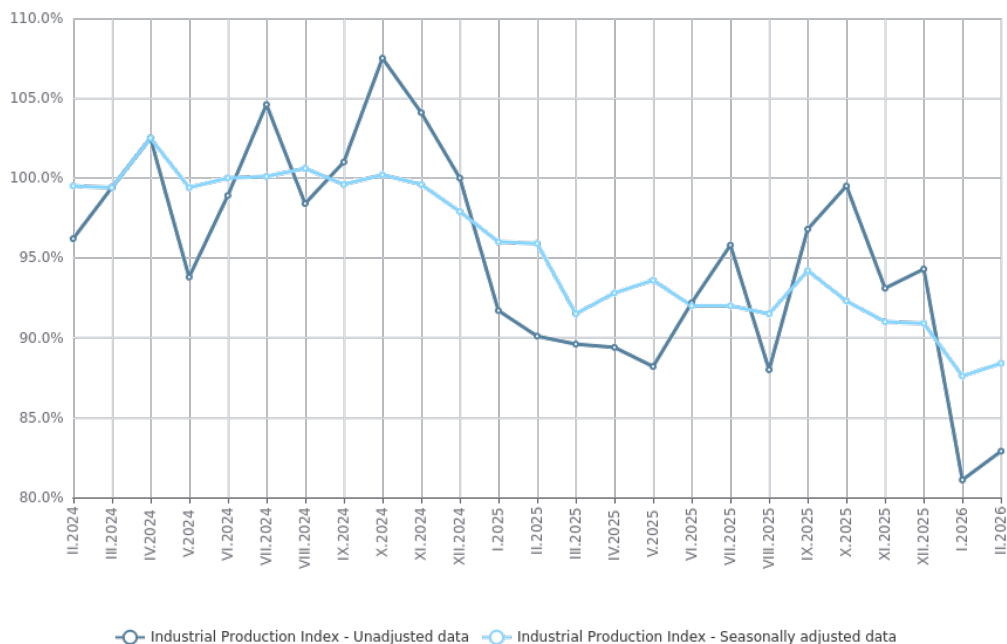


## INDUSTRIAL PRODUCTION INDICES - FEBRUARY 2026 - PRELIMINARY DATA

The index of industrial production in February 2026 increased by 0.9% compared to the previous month. The data are preliminary and seasonally adjusted.

Compared to February 2025, a decrease of 8.1% was registered in the calendar-adjusted index of industrial production.

Figure 1. Industrial Production Indices (2021 = 100)



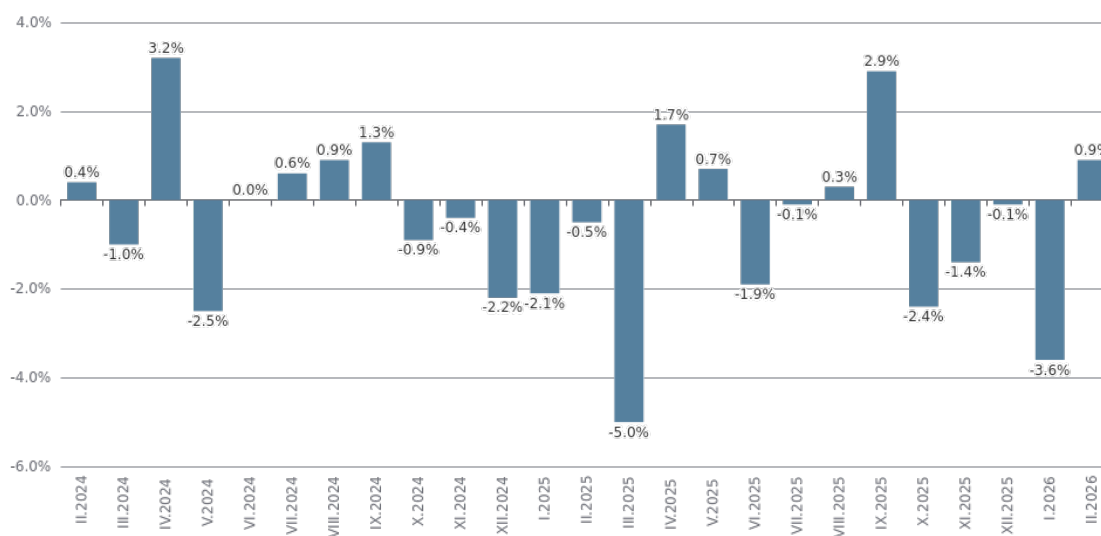
### Monthly changes

In February 2026 compared to January 2026, an increase was observed in the manufacturing industry - by 3.8%, while a decline was recorded in the electricity, gas, steam and air conditioning supply - by 9.4%, and in the mining and quarrying industry - by 3.6%.

Significant growth in the manufacturing industry was recorded in other manufacturing - by 13.3%, in manufacture of leather and related products - by 10.3%, in manufacture of textiles - by 8.4%, and in manufacture of electrical equipment - by 8.2%.

Decreases were registered in the manufacture of wood and of products of wood and cork, except furniture; manufacture of articles of straw and plaiting materials - by 12.8%, and in the manufacture of tobacco products - by 4.6%.

Figure 2. Changes of Industrial Production Indices compared to the previous month (Seasonally adjusted)



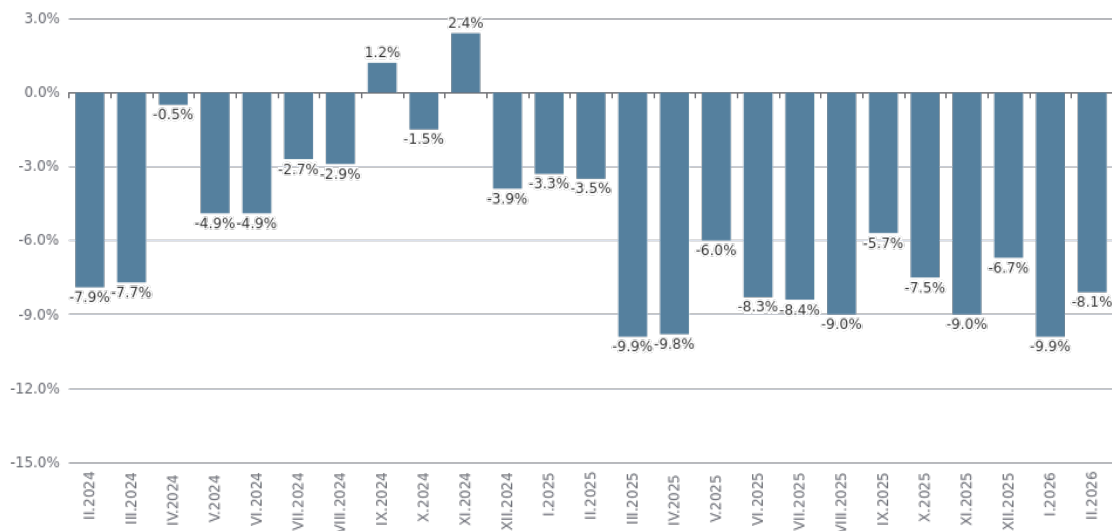
## Annual changes

On an annual basis, a decline in industrial production, calculated from calendar-adjusted data, was recorded in the electricity, gas, steam and air conditioning supply - by 36.1%, and in the mining and quarrying industry - by 21.5%, while an increase was observed in the manufacturing industry - by 0.4%.

In the manufacturing industry, significant growth compared to February 2025 was registered in: manufacture of tobacco products - by 47.3%, manufacture of basic pharmaceutical products and pharmaceutical preparations - by 22.6%, and manufacture of basic metals - by 15.6%.

Declines were recorded in the manufacture of other transport equipment - by 32.4%, and in the manufacture of leather and related products - by 23.2%.

**Figure 3. Changes of the Industrial Production Indices compared to the same month of the previous year (Calendar-adjusted)**



## Methodological notes

The monthly indices of industrial production are calculated in accordance with the requirements of Regulation (EU) 2019/2152 of the European Parliament and of the Council on European Business Statistics.

In relation to the membership of Bulgaria in the euro area from the 1st of January 2026, the National Statistical Institute (NSI) is obliged to produce and publish Industrial Production Indices on the Non-domestic Market in the euro area and in the non-euro area. This is valid for all country members of the euro area.

The Monthly Industrial Production and Industrial Turnover Indices measure changes in production and turnover values of industrial enterprises. This information can be used to access the current economic development and for short-term forecasts. Indices do not measure the actual production level; they aim to measure the average change in the value of production between two points in time. Indices are compiled based on information collected through a representative sampling survey on industrial enterprises. The sample covers enterprises with an annual turnover of more than 97% of the total turnover in the industry.

The Industrial Production Indices are calculated at a constant base year, that is to say they are weighted with the structure of the value added at factor costs in the base year.

Seasonal adjustment is a statistical method which eliminates the seasonal component of the time series.

Calendar adjustment is an adjustment for variations in the monthly data, caused by calendar effects, the different number of calendar and working days in the months, national holidays and outliers (for example, the presence of more non-working days in May could contribute to the decline in production in some activities).

Changes of Industrial Production Indices compared to the previous month							
							(Per cent)
Economic activities	NACE.BG - 2008	IX.2025	X.2025	XI.2025	XII.2025	I.2026	II.2026*
<b>Industry</b>	<b>B_TO_E36</b>	<b>2.9</b>	<b>-2.4</b>	<b>-1.4</b>	<b>-0.1</b>	<b>-3.6</b>	<b>0.9</b>
<b>Mining and quarrying</b>	<b>B</b>	<b>-4.2</b>	<b>-13.0</b>	<b>22.9</b>	<b>-14.8</b>	<b>-18.8</b>	<b>-3.6</b>
Mining of coal and lignite	B05	..	..	..	..	..	..
Extraction of crude petroleum and natural gas	B06	..	..	..	..	..	..
Mining of metal ores	B07	3.4	-5.5	8.3	-12.4	-13.5	-8.4
Other mining and quarrying	B08	-3.8	-7.1	4.9	6.1	-2.8	-1.0
Mining support service activities	B09	..	..	..	..	..	..
<b>Manufacturing</b>	<b>C</b>	<b>2.1</b>	<b>-3.4</b>	<b>1.4</b>	<b>0.2</b>	<b>-4.3</b>	<b>3.8</b>
Manufacture of food products	C10	-4.9	-0.8	6.6	-0.1	-3.6	0.8
Manufacture of beverages	C11	1.7	-3.4	6.9	4.8	-5.4	-0.4
Manufacture of tobacco products	C12	17.9	-17.5	3.2	25.2	12.0	-4.6
Manufacture of textiles	C13	-7.7	6.4	5.8	-8.2	-12.5	8.4
Manufacture of wearing apparel	C14	0.5	4.4	-4.5	4.6	-1.4	-0.4
Manufacture of leather and related products	C15	7.2	-6.5	-3.5	-0.7	-30.4	10.3
Manufacture of wood and of products of wood and cork, except furniture; manufacture of articles of straw and plaiting materials	C16	3.3	-5.9	2.0	5.4	3.3	-12.8
Manufacture of paper and paper products	C17	0.7	1.5	-6.3	1.1	3.7	1.1
Printing and reproduction of recorded media	C18	-2.6	1.2	-8.4	7.3	-3.7	5.8
Manufacture of coke and refined petroleum products	C19	..	..	..	..	..	..
Manufacture of chemicals and chemical products	C20	-5.0	-7.8	5.1	2.6	4.6	-2.2
Manufacture of basic pharmaceutical products and pharmaceutical preparations	C21	-0.5	-3.9	5.0	-11.3	7.8	6.6
Manufacture of rubber and plastic products	C22	3.7	-3.0	5.8	-6.2	5.8	0.5
Manufacture of other non-metallic mineral products	C23	1.8	-3.5	3.5	-7.0	-5.7	2.5
Manufacture of basic metals	C24	5.6	5.9	-1.1	-10.8	12.4	3.4
Manufacture of fabricated metal products, except machinery and equipment	C25	5.0	-8.6	-12.3	8.6	-0.5	5.1
Manufacture of computer, electronic and optical products	C26	15.6	-11.6	3.7	14.1	-17.5	0.7
Manufacture of electrical equipment	C27	4.2	-0.1	21.7	25.0	-39.8	8.2
Manufacture of machinery and equipment n.e.c.	C28	-2.3	-1.3	1.9	5.5	-7.1	0.6
Manufacture of motor vehicles, trailers and semi-trailers	C29	4.0	2.9	-10.9	5.8	-10.2	0.8
Manufacture of other transport equipment	C30	36.9	8.7	-16.2	2.9	-7.7	4.6
Manufacture of furniture	C31	4.7	4.3	-6.7	-2.1	0.3	5.9
Other manufacturing	C32	11.9	7.1	-12.9	14.6	-20.5	13.3
Repair and installation of machinery and equipment	C33	4.6	-22.4	11.8	-5.9	-1.1	1.4
<b>Electricity, gas, steam and air conditioning supply</b>	<b>D</b>	<b>15.8</b>	<b>10.1</b>	<b>-34.5</b>	<b>29.9</b>	<b>0.7</b>	<b>-9.4</b>
Electricity, gas, steam and air conditioning supply	D35	15.8	10.1	-34.5	29.9	0.7	-9.4
Seasonally adjusted.							
* Preliminary data.							
„...“ - Confidential data.							

Table 2

Changes of Industrial Production Indices compared to the same month of the previous year							
							(Per cent)
<b>Economic activities</b>	<b>NACE.BG - 2008</b>	<b>IX.2025</b>	<b>X.2025</b>	<b>XI.2025</b>	<b>XII.2025</b>	<b>I.2026</b>	<b>II.2026*</b>
<b>Industry</b>	<b>B_TO_E36</b>	<b>-5.7</b>	<b>-7.5</b>	<b>-9.0</b>	<b>-6.7</b>	<b>-9.9</b>	<b>-8.1</b>
<b>Mining and quarrying</b>	<b>B</b>	<b>-18.9</b>	<b>-10.7</b>	<b>12.5</b>	<b>-22.3</b>	<b>-23.4</b>	<b>-21.5</b>
Mining of coal and lignite	B05	..	..	..	..	..	..
Extraction of crude petroleum and natural gas	B06	..	..	..	..	..	..
Mining of metal ores	B07	-14.6	-10.9	27.2	-12.4	-18.3	-19.9
Other mining and quarrying	B08	-5.3	-16.5	-12.8	2.3	-10.7	12.5
Mining support service activities	B09	..	..	..	..	..	..
<b>Manufacturing</b>	<b>C</b>	<b>-0.1</b>	<b>-6.2</b>	<b>-4.3</b>	<b>-1.2</b>	<b>-7.0</b>	<b>0.4</b>
Manufacture of food products	C10	-17.4	-21.9	-8.9	-9.7	-9.9	-0.5
Manufacture of beverages	C11	-13.9	-14.9	-3.1	1.6	-5.9	-4.9
Manufacture of tobacco products	C12	27.2	7.9	26.4	36.2	66.6	47.3
Manufacture of textiles	C13	-33.2	-15.3	-0.6	-13.2	-18.7	-12.1
Manufacture of wearing apparel	C14	-20.3	-15.4	-24.1	-2.8	-5.1	-5.5
Manufacture of leather and related products	C15	18.0	-4.3	-7.8	1.5	-33.3	-23.2
Manufacture of wood and of products of wood and cork, except furniture; manufacture of articles of straw and plaiting materials	C16	-11.9	-13.7	-13.6	-10.0	-2.5	-15.2
Manufacture of paper and paper products	C17	-25.6	-18.7	-23.3	-16.7	-2.3	-4.5
Printing and reproduction of recorded media	C18	-7.8	-3.7	-14.4	-4.2	-8.4	1.3
Manufacture of coke and refined petroleum products	C19	..	..	..	..	..	..
Manufacture of chemicals and chemical products	C20	-11.3	-14.4	-18.4	-10.3	-1.4	-0.4
Manufacture of basic pharmaceutical products and pharmaceutical preparations	C21	15.8	-2.7	17.2	-13.4	2.5	22.6
Manufacture of rubber and plastic products	C22	-5.3	-6.4	-1.9	-10.5	1.3	2.9
Manufacture of other non-metallic mineral products	C23	23.1	12.3	13.3	-10.7	-18.1	-3.2
Manufacture of basic metals	C24	-19.9	-8.4	-6.4	-3.3	13.8	15.6
Manufacture of fabricated metal products, except machinery and equipment	C25	18.6	-6.3	-13.3	-2.2	-15.0	9.0
Manufacture of computer, electronic and optical products	C26	18.2	4.0	3.4	21.1	14.9	-0.3
Manufacture of electrical equipment	C27	4.5	-1.4	14.2	57.7	-7.1	6.2
Manufacture of machinery and equipment n.e.c.	C28	1.9	-1.2	8.1	11.7	1.6	-2.3
Manufacture of motor vehicles, trailers and semi-trailers	C29	0.2	13.0	-6.6	10.1	-17.8	-15.8
Manufacture of other transport equipment	C30	-8.6	-8.6	-17.7	-15.8	-23.3	-32.4
Manufacture of furniture	C31	24.0	27.1	18.7	11.6	16.2	11.8
Other manufacturing	C32	25.7	3.4	-4.5	0.6	-4.9	-9.5
Repair and installation of machinery and equipment	C33	10.1	-24.8	5.9	-5.5	-16.9	-0.6
<b>Electricity, gas, steam and air conditioning supply</b>	<b>D</b>	<b>-25.0</b>	<b>-10.9</b>	<b>-43.4</b>	<b>-14.1</b>	<b>-18.5</b>	<b>-36.1</b>
Electricity, gas, steam and air conditioning supply	D35	-25.0	-10.9	-43.4	-14.1	-18.5	-36.1
Calendar-adjusted.							
* Preliminary data.							
„...“ - Confidential data.							

Table 3

Industrial Production Indices (Seasonally adjusted, 2021 = 100)													
NACE.BG - 2008	II.2025	III.2025	IV.2025	V.2025	VI.2025	VII.2025	VIII.2025	IX.2025	X.2025	XI.2025	XII.2025	I.2026	II.2026*
<b>B_TO_E36</b>	<b>96.0</b>	<b>91.2</b>	<b>92.7</b>	<b>93.4</b>	<b>91.6</b>	<b>91.6</b>	<b>91.9</b>	<b>94.5</b>	<b>92.3</b>	<b>91.0</b>	<b>90.9</b>	<b>87.6</b>	<b>88.4</b>
<b>B</b>	<b>79.8</b>	<b>84.3</b>	<b>83.1</b>	<b>83.9</b>	<b>97.3</b>	<b>86.4</b>	<b>93.9</b>	<b>89.9</b>	<b>78.2</b>	<b>96.1</b>	<b>81.9</b>	<b>66.5</b>	<b>64.1</b>
B05	..	..	..	..	..	..	..	..	..	..	..	..	..
B06	..	..	..	..	..	..	..	..	..	..	..	..	..
B07	97.3	98.6	95.1	91.4	105.0	101.3	105.2	108.7	102.8	111.3	97.5	84.3	77.2
B08	67.2	73.2	77.6	76.2	73.5	76.6	79.5	76.5	71.1	74.6	79.1	76.9	76.2
B09	..	..	..	..	..	..	..	..	..	..	..	..	..
<b>C</b>	<b>101.8</b>	<b>101.4</b>	<b>99.6</b>	<b>101.6</b>	<b>99.2</b>	<b>101.1</b>	<b>101.7</b>	<b>103.9</b>	<b>100.3</b>	<b>101.8</b>	<b>102.0</b>	<b>97.6</b>	<b>101.4</b>
C10	88.6	89.4	90.9	91.6	88.8	89.9	89.6	85.2	84.5	90.1	90.0	86.8	87.5
C11	99.9	95.0	96.7	95.3	94.5	91.0	90.6	92.2	89.0	95.1	99.7	94.3	93.9
C12	92.3	91.2	116.3	102.2	99.2	92.6	87.9	103.6	85.5	88.2	110.5	123.8	118.1
C13	53.8	53.3	54.3	51.6	47.8	54.9	52.4	48.4	51.5	54.5	50.0	43.8	47.5
C14	77.6	74.0	76.9	72.5	77.8	71.2	70.3	70.6	73.7	70.3	73.6	72.6	72.3
C15	60.6	59.5	67.8	65.1	63.2	57.6	63.9	68.5	64.1	61.9	61.4	42.7	47.1
C16	86.7	84.6	82.4	78.7	78.5	77.6	78.6	81.1	76.3	77.8	82.0	84.7	73.9
C17	76.1	74.7	73.9	71.5	70.3	72.5	71.2	71.7	72.8	68.2	69.0	71.6	72.4
C18	88.1	93.5	90.6	91.9	93.0	88.1	90.2	87.8	88.9	81.4	87.3	84.1	89.0
C19	..	..	..	..	..	..	..	..	..	..	..	..	..
C20	94.0	93.5	91.7	98.5	89.1	92.2	96.8	91.9	84.8	89.1	91.4	95.7	93.5
C21	107.0	114.1	108.3	110.8	127.0	115.3	124.4	123.8	118.9	124.9	110.8	119.4	127.3
C22	80.7	81.6	82.1	79.7	81.0	78.4	77.3	80.2	77.8	82.3	77.2	81.6	82.1
C23	99.1	103.2	95.3	106.5	103.8	106.6	105.7	107.5	103.8	107.5	99.9	94.2	96.6
C24	74.6	75.0	72.5	72.9	70.8	77.2	73.4	77.6	82.1	81.2	72.5	81.5	84.3
C25	159.0	179.5	167.7	170.0	144.9	170.0	179.9	188.8	172.6	151.4	164.4	163.5	171.9
C26	107.7	121.1	99.7	102.6	108.4	102.2	107.6	124.4	109.9	114.0	130.0	107.2	107.9
C27	96.1	98.9	108.5	101.7	98.7	96.8	98.8	102.9	102.8	125.2	156.5	94.3	102.0
C28	98.2	100.7	93.5	94.8	93.2	91.8	99.0	96.7	95.5	97.3	102.6	95.3	95.8
C29	111.9	116.2	115.0	120.7	113.1	112.6	104.6	108.9	112.0	99.8	105.6	94.8	95.5
C30	123.5	83.3	105.4	98.0	87.8	68.0	65.7	89.9	97.7	81.9	84.2	77.7	81.3
C31	90.1	97.3	89.7	93.6	86.2	89.3	94.3	98.7	102.9	96.0	94.1	94.3	99.9
C32	132.9	112.9	131.2	130.5	113.6	128.9	111.8	125.1	134.0	116.8	133.8	106.4	120.5
C33	108.0	103.9	109.3	99.9	117.0	118.4	125.8	131.5	102.1	114.1	107.4	106.3	107.7
<b>D</b>	<b>83.9</b>	<b>47.8</b>	<b>73.5</b>	<b>67.7</b>	<b>63.2</b>	<b>63.1</b>	<b>53.8</b>	<b>62.3</b>	<b>68.6</b>	<b>44.9</b>	<b>58.4</b>	<b>58.8</b>	<b>53.3</b>
D35	83.9	47.8	73.5	67.7	63.2	63.1	53.8	62.3	68.6	44.9	58.4	58.8	53.3
* Preliminary data.													
... - Confidential data.													

Table 4

Industrial Production Indices (Calendar-adjusted, 2021 = 100)													
NACE.BG - 2008	II.2025	III.2025	IV.2025	V.2025	VI.2025	VII.2025	VIII.2025	IX.2025	X.2025	XI.2025	XII.2025	I.2026	II.2026*
<b>B_TO_E36</b>	<b>90.7</b>	<b>91.8</b>	<b>89.1</b>	<b>89.1</b>	<b>92.9</b>	<b>94.4</b>	<b>89.7</b>	<b>96.8</b>	<b>98.1</b>	<b>95.4</b>	<b>94.9</b>	<b>81.8</b>	<b>83.4</b>
<b>B</b>	<b>75.1</b>	<b>81.8</b>	<b>75.5</b>	<b>76.8</b>	<b>93.9</b>	<b>82.5</b>	<b>94.2</b>	<b>96.9</b>	<b>85.5</b>	<b>104.0</b>	<b>92.6</b>	<b>63.2</b>	<b>59.0</b>
B05	..	..	..	..	..	..	..	..	..	..	..	..	..
B06	..	..	..	..	..	..	..	..	..	..	..	..	..
B07	84.8	95.4	90.6	91.4	113.6	96.5	112.6	117.7	97.8	122.5	108.7	75.5	67.9
B08	52.7	69.6	76.1	79.2	78.6	80.5	83.5	81.4	79.9	83.8	80.4	56.1	59.3
B09	..	..	..	..	..	..	..	..	..	..	..	..	..
<b>C</b>	<b>93.1</b>	<b>103.7</b>	<b>98.0</b>	<b>100.7</b>	<b>103.3</b>	<b>104.9</b>	<b>98.4</b>	<b>106.9</b>	<b>108.4</b>	<b>106.5</b>	<b>101.4</b>	<b>86.9</b>	<b>93.5</b>
C10	77.0	88.7	87.6	90.3	89.2	89.8	91.2	88.2	93.4	94.2	93.0	78.6	76.6
C11	72.5	86.4	93.0	97.1	113.1	111.3	110.5	103.5	81.4	87.6	96.5	70.1	69.0
C12	63.4	96.4	127.3	119.4	121.1	118.1	90.2	114.6	89.0	81.3	100.6	88.1	93.3
C13	54.1	56.6	54.0	54.9	50.9	56.4	43.8	49.2	54.7	58.9	44.7	38.7	47.6
C14	77.3	72.4	69.7	65.5	85.0	80.4	65.6	69.3	78.2	72.4	71.8	76.8	73.1
C15	58.5	62.5	67.3	62.0	67.9	61.9	51.2	68.7	71.5	71.4	57.7	41.8	44.9
C16	77.4	85.6	82.7	81.7	82.0	82.3	75.9	84.1	81.0	84.4	77.7	74.2	65.7
C17	70.9	77.0	71.0	71.1	74.0	76.6	66.4	72.0	81.2	73.4	62.5	67.6	67.7
C18	79.5	95.6	89.1	92.0	97.1	86.8	83.4	84.2	95.2	91.6	92.9	74.9	80.6
C19	..	..	..	..	..	..	..	..	..	..	..	..	..
C20	89.2	101.8	92.7	97.8	91.5	93.0	92.7	90.8	85.0	91.7	90.5	90.4	88.8
C21	96.2	125.0	106.2	107.2	141.8	112.1	116.1	116.2	125.9	131.2	110.1	116.8	117.9
C22	75.5	84.6	81.8	79.2	85.5	81.7	72.3	82.9	84.1	86.3	69.3	75.6	77.8
C23	83.3	103.3	96.1	112.9	109.0	115.6	108.7	113.1	113.7	115.3	92.2	69.5	80.6
C24	71.9	80.3	73.1	75.6	72.4	78.2	66.8	76.5	89.6	86.9	63.0	80.7	83.1
C25	139.7	180.7	169.5	166.6	147.3	182.9	177.7	192.5	184.0	164.0	169.5	130.7	152.2
C26	104.7	127.9	96.8	98.7	114.5	104.8	94.5	128.3	122.1	120.6	126.3	98.2	104.4
C27	95.9	102.5	107.9	95.5	106.1	100.2	91.4	105.8	108.7	128.2	136.6	85.2	101.9
C28	95.5	107.7	94.7	92.9	98.1	93.6	87.7	98.5	103.5	101.8	100.0	85.1	93.3
C29	114.9	125.6	114.9	119.4	116.5	106.6	92.1	108.1	119.4	106.6	93.5	95.1	96.8
C30	124.3	81.7	110.4	98.0	91.3	62.9	59.4	88.7	112.8	79.9	75.5	62.5	83.9
C31	83.9	103.1	87.9	93.6	90.7	91.8	89.8	99.7	111.9	100.3	91.1	81.5	93.8
C32	117.3	113.2	127.5	129.1	129.0	130.5	110.0	130.3	149.0	124.1	123.1	90.5	106.2
C33	92.0	103.3	99.3	93.6	120.6	120.0	123.3	141.0	106.5	124.2	141.9	78.4	91.4
<b>D</b>	<b>90.7</b>	<b>53.4</b>	<b>63.4</b>	<b>51.3</b>	<b>52.4</b>	<b>59.8</b>	<b>52.6</b>	<b>58.0</b>	<b>65.8</b>	<b>49.1</b>	<b>70.2</b>	<b>71.1</b>	<b>58.0</b>
D35	90.7	53.4	63.4	51.3	52.4	59.8	52.6	58.0	65.8	49.1	70.2	71.1	58.0
* Preliminary data.													
*** - Confidential data.													